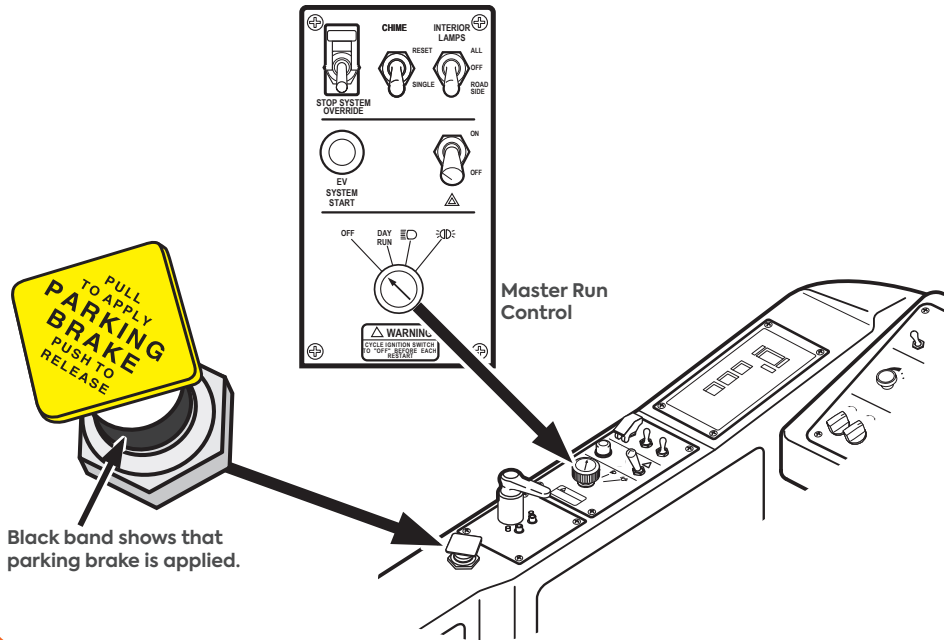


# EMERGENCY MANUAL SHUTDOWN

For GILLIG Battery Electric Bus

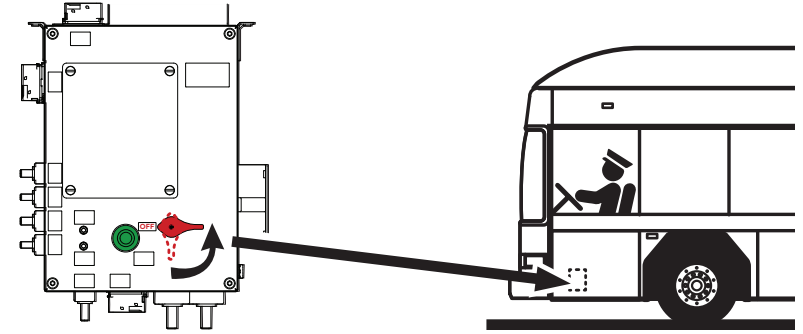
- 1** Set the parking brake and then turn the master run control to “OFF” position.

**NOTE:** Proceed to Step 2 even if Step 1 cannot be completed.

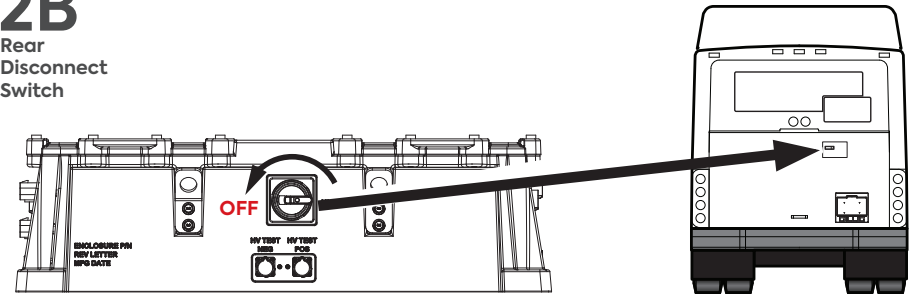


- 2A** Rotate front disconnect switch to “OFF” position (Front of Bus)  
**OR**  
**2B** Rotate rear disconnect switch to “OFF” position (Rear of Bus)

**2A**  
Front Disconnect Switch



**2B**  
Rear Disconnect Switch



- 3** Inform emergency personnel of the onboard high-voltage components (See the reverse side of this card)

- 4** Wait ten minutes after shutdown before accessing high-voltage components (This is a mandatory safety discharge period)

System Manufacturer: **Cummins**  
Model: **BES CM 2450 EV101B**  
Emergency Call: **1.800.CUMMINS (1.800.286.6467)**

**GILLIG**

51-82371-004  
©2020 GILLIG LLC

# PRECAUTIONS

## For GILLIG Battery Electric Bus



### BATTERY WARNING



- Lithium ion batteries contain flammable liquid electrolyte that may vent, ignite, and produce sparks when subjected to temperatures higher than **150°C (302°F)** when damaged.
- Do **NOT** step on top of batteries
- Burning cells can ignite other batteries in close proximity.
- The interaction of water or water vapor and exposed lithium hexfluorophosphate (Li PF<sub>6</sub>) may result in the generation of hydrogen and hydrogen fluoride (HF) gas.
- Contact with battery electrolyte may be irritating to skin, eyes, and mucous membranes.
- Fire will produce irritating, corrosive, and/or toxic gases.
- Fumes may cause dizziness or suffocation.



### FIRE WARNING



#### In case of fire:

- Wear a positive pressure self-contained breathing apparatus (SCBA); structural firefighting clothing is required.
- Extinguish fires using an **ABC extinguisher**
- Do **NOT** use a Class D extinguisher.



### PROTECTIVE EQUIPMENT



If working near high-voltage cabling or components, use **1,000 VDC, Class 00** electrical gloves, rubber-soled shoes, and make sure you and the environment are perfectly dry.



### HIGH-VOLTAGE WARNING

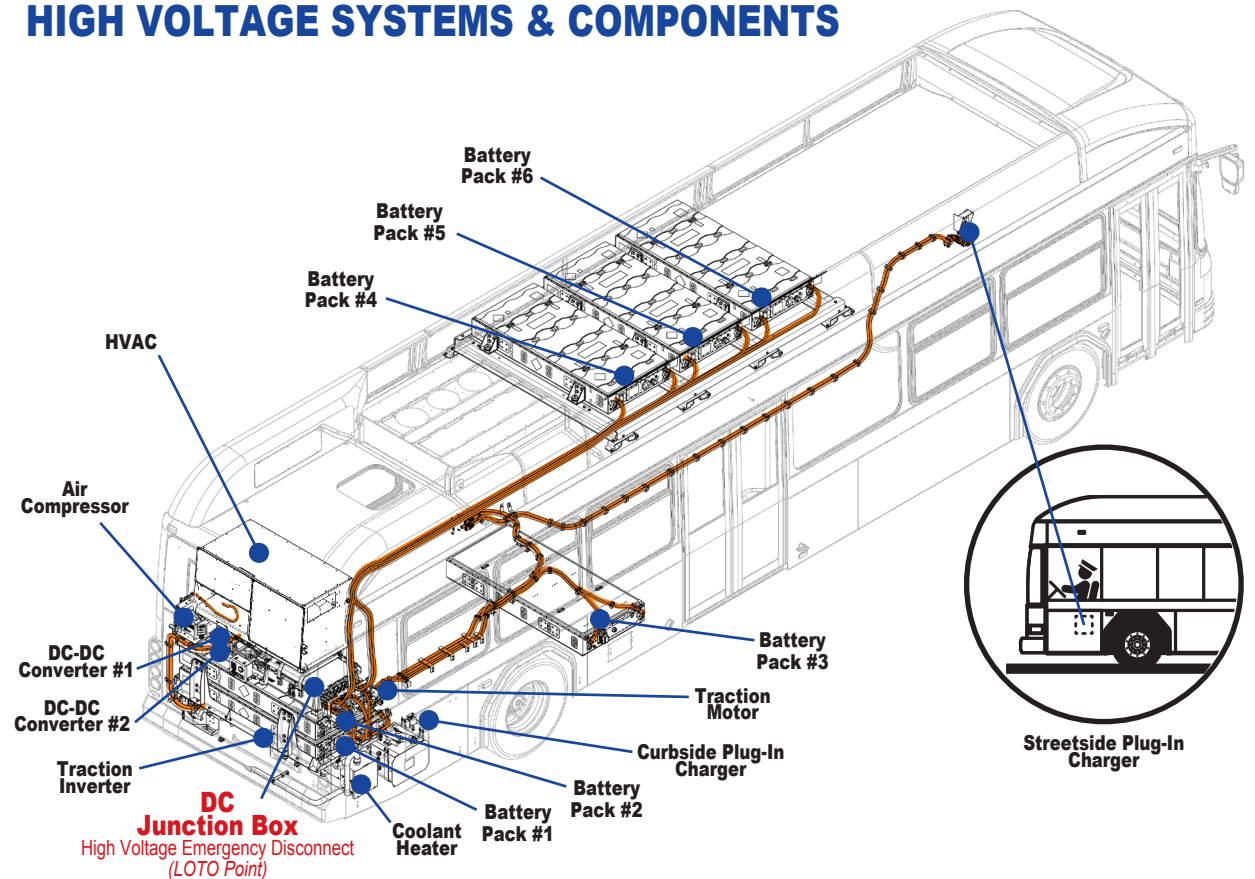


Operating voltage of the Cummins electric drive system is **750 VOLTS!** HVIL (high-voltage interlock loop) systems protect all circuits and components, but it is still possible to receive a fatal electric shock from the high-voltage system.

Avoid cutting and handling orange high-voltage cables and components, as this could result in severe injury or death!

See the reverse of this card for system shutdown information.

### HIGH VOLTAGE SYSTEMS & COMPONENTS



System Manufacturer: **Cummins**

Model: **BES CM 2450 EV101B**

Emergency Call: **1.800.CUMMINS (1.800.286.6467)**

# GILLIG

51-82371-004  
©2020 GILLIG LLC