



## Premier Environmental Solutions, LLC | ACM+

---

100 North Barranca Street, Suite 407  
West Covina, CA 91791  
Office: 800-868-1668  
CSLB # 979651 | DOSH # 1201  
Tax ID # 88-1295726

Client: Morongo Valley Fire Department  
Property: 11207 Ocotillo  
Morongo Valley, CA 92256

Operator: STUART

Estimator: Stuart Melendez

Business: (714) 349-6059  
E-mail: [stuart@premier-enviro.com](mailto:stuart@premier-enviro.com)

Type of Estimate: Asbestos

Date Entered: 8/1/2023

Date Assigned:

Price List: CALA8X\_AUG23

Labor Efficiency: Restoration/Service/Remodel

Estimate: MORONGO-FIRE-DEPT



**Premier Environmental Solutions, LLC | ACM+**

100 North Barranca Street, Suite 407  
 West Covina, CA 91791  
 Office: 800-868-1668  
 CSLB # 979651 | DOSH # 1201  
 Tax ID # 88-1295726

**MORONGO-FIRE-DEPT**

**Main Level**

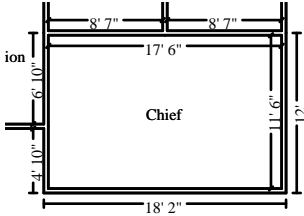
**Main Level**

DESCRIPTION	QTY	REMOVE	REPLACE	TAX	TOTAL
1. Containment Barrier/Airlock/Decon. Chamber decontamination chamber	200.00 SF	0.00	1.40	3.44	283.44
2. Temporary safety shower	1.00 EA	0.00	90.61	0.00	90.61
3. Add for personal protective equipment - Heavy duty 4 changes per day, per tech, per OSHA regs	128.00 EA	0.00	38.87	534.85	5,510.21
4. Eye protection - plastic goggles - Disposable	32.00 EA	0.00	11.02	37.91	390.55
5. Personal protective gloves - Heavy duty (per pair)	32.00 EA	0.00	5.83	20.06	206.62
6. Peel & seal zipper - heavy duty zippers for decontamination chamber	4.00 EA	0.00	18.78	5.41	80.53
7. Respirator - Half face - multi-purpose resp. (per day)	32.00 DA	0.00	1.67	0.00	53.44
8. Respirator cartridge - HEPA only (per pair)	32.00 EA	0.00	15.26	52.49	540.81
9. Plastic bag - used for hazardous waste cleanup - Large	700.00 EA	0.00	3.76	282.94	2,914.94
10. Negative air fan/Air scrubber (24 hr period) - No monit.	16.00 DA	0.00	73.02	0.00	1,168.32
11. Add for HEPA filter (for negative air exhaust fan) 1 filter for demo, 1 filter for clearance	2.00 EA	0.00	212.57	41.27	466.41
12. Ducting - lay-flat	60.00 LF	0.00	0.38	2.45	25.25
13. Hazardous waste hauling & disposal - (Bid Item)	1.00 EA	0.00	600.00	0.00	600.00
14. Equipment decontamination charge - per piece of equipment decontaminate air scrubbers, hepa vacuums, 2 airless, 2 buffers	8.00 EA	0.00	51.30	4.20	414.60
<b>Total: Main Level</b>				<b>985.02</b>	<b>12,745.73</b>



**Premier Environmental Solutions, LLC | ACM+**

100 North Barranca Street, Suite 407  
 West Covina, CA 91791  
 Office: 800-868-1668  
 CSLB # 979651 | DOSH # 1201  
 Tax ID # 88-1295726

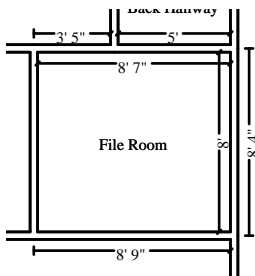


**Chief**

**Height: 8'**

464.00 SF Walls	201.25 SF Ceiling
665.25 SF Walls & Ceiling	201.25 SF Floor
22.36 SY Flooring	58.00 LF Floor Perimeter
58.00 LF Ceil. Perimeter	

DESCRIPTION	QTY	REMOVE	REPLACE	TAX	TOTAL
15. Containment Barrier/Airlock/Decon. Chamber	1,733.00 SF	0.00	1.40	29.81	2,456.01
16. Tear off asbestos drywall (no haul off)	201.25 SF	2.81	0.00	7.57	573.08
17. Tear out wet non-salvageable carpet, cut & bag for disp.	201.25 SF	0.83	0.00	1.51	168.55
18. Remove asbestos floor mastic (no haul off)	201.25 SF	5.39	0.00	1.30	1,086.04
19. Apply asbestos fiber encapsulating compound	402.50 SF	0.00	1.32	21.63	552.93
<b>Totals: Chief</b>				<b>61.82</b>	<b>4,836.61</b>



**File Room**

**Height: 8'**

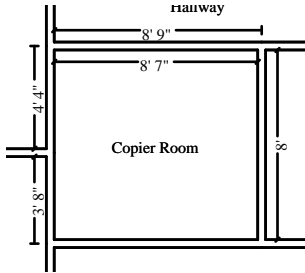
265.33 SF Walls	68.67 SF Ceiling
334.00 SF Walls & Ceiling	68.67 SF Floor
7.63 SY Flooring	33.17 LF Floor Perimeter
33.17 LF Ceil. Perimeter	

DESCRIPTION	QTY	REMOVE	REPLACE	TAX	TOTAL
20. Containment Barrier/Airlock/Decon. Chamber	805.33 SF	0.00	1.40	13.85	1,141.31
21. Tear off asbestos drywall (no haul off)	68.67 SF	2.81	0.00	2.58	195.54
22. Tear out wet non-salvageable carpet, cut & bag for disp.	68.67 SF	0.83	0.00	0.52	57.52
23. Remove asbestos floor mastic (no haul off)	68.67 SF	5.39	0.00	0.44	370.57
24. Apply asbestos fiber encapsulating compound	137.33 SF	0.00	1.32	7.38	188.66
<b>Totals: File Room</b>				<b>24.77</b>	<b>1,953.60</b>



**Premier Environmental Solutions, LLC | ACM+**

100 North Barranca Street, Suite 407  
 West Covina, CA 91791  
 Office: 800-868-1668  
 CSLB # 979651 | DOSH # 1201  
 Tax ID # 88-1295726



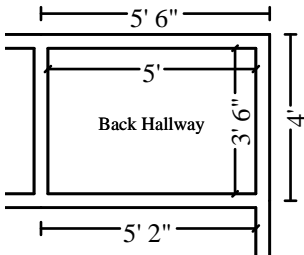
**Copier Room**

**Height: 8'**

265.33 SF Walls  
 334.00 SF Walls & Ceiling  
 7.63 SY Flooring  
 33.17 LF Ceil. Perimeter

68.67 SF Ceiling  
 68.67 SF Floor  
 33.17 LF Floor Perimeter

DESCRIPTION	QTY	REMOVE	REPLACE	TAX	TOTAL
25. Containment Barrier/Airlock/Decon. Chamber	805.33 SF	0.00	1.40	13.85	1,141.31
26. Tear off asbestos drywall (no haul off)	68.67 SF	2.81	0.00	2.58	195.54
27. Tear out wet non-salvageable carpet, cut & bag for disp.	68.67 SF	0.83	0.00	0.52	57.52
28. Remove asbestos floor mastic (no haul off)	68.67 SF	5.39	0.00	0.44	370.57
29. Apply asbestos fiber encapsulating compound	137.33 SF	0.00	1.32	7.38	188.66
<b>Totals: Copier Room</b>				<b>24.77</b>	<b>1,953.60</b>



**Back Hallway**

**Height: 8'**

136.00 SF Walls  
 153.50 SF Walls & Ceiling  
 1.94 SY Flooring  
 17.00 LF Ceil. Perimeter

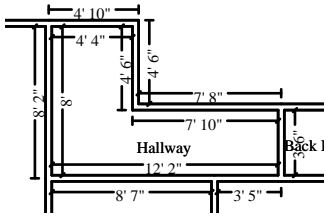
17.50 SF Ceiling  
 17.50 SF Floor  
 17.00 LF Floor Perimeter

DESCRIPTION	QTY	REMOVE	REPLACE	TAX	TOTAL
30. Containment Barrier/Airlock/Decon. Chamber	342.00 SF	0.00	1.40	5.88	484.68
31. Tear off asbestos drywall (no haul off)	17.50 SF	2.81	0.00	0.66	49.84
32. Tear out wet non-salvageable carpet, cut & bag for disp.	17.50 SF	0.83	0.00	0.13	14.66
33. Remove asbestos floor mastic (no haul off)	17.50 SF	5.39	0.00	0.11	94.44
34. Apply asbestos fiber encapsulating compound	35.00 SF	0.00	1.32	1.88	48.08
<b>Totals: Back Hallway</b>				<b>8.66</b>	<b>691.70</b>



**Premier Environmental Solutions, LLC | ACM+**

100 North Barranca Street, Suite 407  
 West Covina, CA 91791  
 Office: 800-868-1668  
 CSLB # 979651 | DOSH # 1201  
 Tax ID # 88-1295726

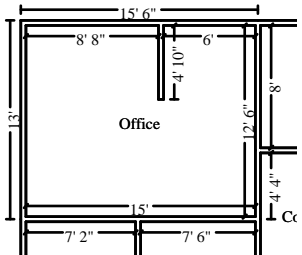


**Hallway**

**Height: 8'**

322.67 SF Walls	62.10 SF Ceiling
384.76 SF Walls & Ceiling	62.10 SF Floor
6.90 SY Flooring	40.33 LF Floor Perimeter
40.33 LF Ceil. Perimeter	

DESCRIPTION	QTY	REMOVE	REPLACE	TAX	TOTAL
35. Containment Barrier/Airlock/Decon. Chamber	893.72 SF	0.00	1.40	15.37	1,266.58
36. Tear off asbestos drywall (no haul off)	62.10 SF	2.81	0.00	2.34	176.84
37. Tear out wet non-salvageable carpet, cut & bag for disp.	62.10 SF	0.83	0.00	0.47	52.01
38. Remove asbestos floor mastic (no haul off)	62.10 SF	5.39	0.00	0.40	335.12
39. Apply asbestos fiber encapsulating compound	124.19 SF	0.00	1.32	6.68	170.61
<b>Totals: Hallway</b>				<b>25.26</b>	<b>2,001.16</b>



**Office**

**Height: 8'**

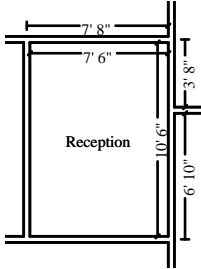
517.33 SF Walls	185.83 SF Ceiling
703.17 SF Walls & Ceiling	185.83 SF Floor
20.65 SY Flooring	64.67 LF Floor Perimeter
64.67 LF Ceil. Perimeter	

DESCRIPTION	QTY	REMOVE	REPLACE	TAX	TOTAL
40. Containment Barrier/Airlock/Decon. Chamber	1,778.00 SF	0.00	1.40	30.58	2,519.78
41. Tear off asbestos drywall (no haul off)	185.83 SF	2.81	0.00	6.99	529.17
42. Tear out wet non-salvageable carpet, cut & bag for disp.	185.83 SF	0.83	0.00	1.40	155.64
43. Remove asbestos floor mastic (no haul off)	185.83 SF	5.39	0.00	1.20	1,002.82
44. Apply asbestos fiber encapsulating compound	371.67 SF	0.00	1.32	19.98	510.58
<b>Totals: Office</b>				<b>60.15</b>	<b>4,717.99</b>



**Premier Environmental Solutions, LLC | ACM+**

100 North Barranca Street, Suite 407  
 West Covina, CA 91791  
 Office: 800-868-1668  
 CSLB # 979651 | DOSH # 1201  
 Tax ID # 88-1295726

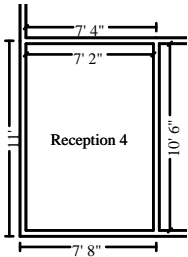


**Reception**

**Height: 8'**

288.00 SF Walls	78.75 SF Ceiling
366.75 SF Walls & Ceiling	78.75 SF Floor
8.75 SY Flooring	36.00 LF Floor Perimeter
36.00 LF Ceil. Perimeter	

DESCRIPTION	QTY	REMOVE	REPLACE	TAX	TOTAL
45. Containment Barrier/Airlock/Decon. Chamber	891.00 SF	0.00	1.40	15.33	1,262.73
46. Tear off asbestos drywall (no haul off)	78.75 SF	2.81	0.00	2.96	224.25
47. Tear out wet non-salvageable carpet, cut & bag for disp.	78.75 SF	0.83	0.00	0.59	65.95
48. Remove asbestos floor mastic (no haul off)	78.75 SF	5.39	0.00	0.51	424.97
49. Apply asbestos fiber encapsulating compound	157.50 SF	0.00	1.32	8.47	216.37
<b>Totals: Reception</b>				<b>27.86</b>	<b>2,194.27</b>



**Reception 4**

**Height: 8'**

282.67 SF Walls	75.25 SF Ceiling
357.92 SF Walls & Ceiling	75.25 SF Floor
8.36 SY Flooring	35.33 LF Floor Perimeter
35.33 LF Ceil. Perimeter	

DESCRIPTION	QTY	REMOVE	REPLACE	TAX	TOTAL
50. Containment Barrier/Airlock/Decon. Chamber	866.33 SF	0.00	1.40	14.90	1,227.76
51. Tear off asbestos drywall (no haul off)	75.25 SF	2.81	0.00	2.83	214.28
52. Tear out wet non-salvageable carpet, cut & bag for disp.	75.25 SF	0.83	0.00	0.57	63.03
53. Remove asbestos floor mastic (no haul off)	75.25 SF	5.39	0.00	0.49	406.09
54. Apply asbestos fiber encapsulating compound	150.50 SF	0.00	1.32	8.09	206.75
<b>Totals: Reception 4</b>				<b>26.88</b>	<b>2,117.91</b>



**Premier Environmental Solutions, LLC | ACM+**

100 North Barranca Street, Suite 407  
 West Covina, CA 91791  
 Office: 800-868-1668  
 CSLB # 979651 | DOSH # 1201  
 Tax ID # 88-1295726

Total: Main Level	<b>1,245.19</b>	<b>33,212.57</b>
<b>Line Item Totals: MORONGO-FIRE-DEPT</b>	<b>1,245.19</b>	<b>33,212.57</b>

**Grand Total Areas:**

2,541.33 SF Walls	758.01 SF Ceiling	3,299.35 SF Walls and Ceiling
758.01 SF Floor	84.22 SY Flooring	317.67 LF Floor Perimeter
0.00 SF Long Wall	0.00 SF Short Wall	317.67 LF Ceil. Perimeter
758.01 Floor Area	832.57 Total Area	2,621.33 Interior Wall Area
1,122.00 Exterior Wall Area	124.67 Exterior Perimeter of Walls	
0.00 Surface Area	0.00 Number of Squares	0.00 Total Perimeter Length
0.00 Total Ridge Length	0.00 Total Hip Length	



**Premier Environmental Solutions, LLC | ACM+**

---

100 North Barranca Street, Suite 407  
West Covina, CA 91791  
Office: 800-868-1668  
CSLB # 979651 | DOSH # 1201  
Tax ID # 88-1295726

**Recap by Category**

<b>Items</b>	<b>Total</b>	<b>%</b>
<b>GENERAL DEMOLITION</b>	<b>6,844.93</b>	<b>20.61%</b>
<b>HAZARDOUS MATERIAL REMEDIATION</b>	<b>23,931.33</b>	<b>72.06%</b>
<b>WATER EXTRACTION &amp; REMEDIATION</b>	<b>1,191.12</b>	<b>3.59%</b>
<b>Subtotal</b>	<b>31,967.38</b>	<b>96.25%</b>
<b>Material Sales Tax</b>	<b>1,245.19</b>	<b>3.75%</b>
<b>Total</b>	<b>33,212.57</b>	<b>100.00%</b>



